

# SANDING

Pneumatic Belt Sander

## BABY BELTON

*Ideal for deburring, chamfering, bead grinding, and polishing applications*

- Compact and lightweight, yet powerful
- Alternative rotation direction
- Ergonomically designed for left or right hand operator convenience

### BABY BELTON-10

Model **BB-10B** 

- Lever switch type
- Belt size 10 mm (W)



### BABY BELTON-10

Model **BB-10B** Non-CE

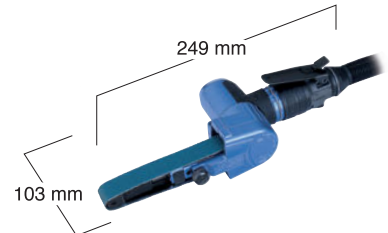
- Ring switch type
- Belt size 10 mm (W)



### BABY BELTON-20

Model **BB-20** 

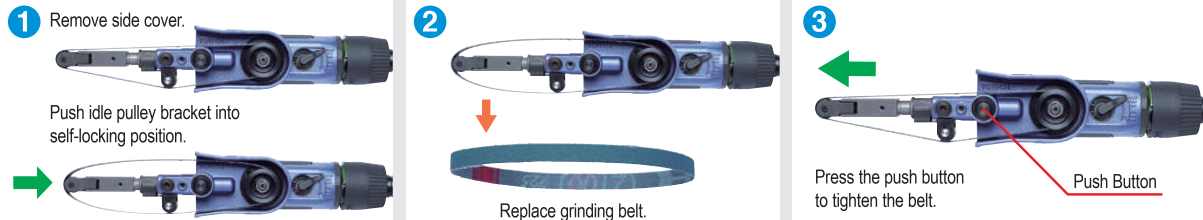
- Belt size 20 mm (W)



### Specifications

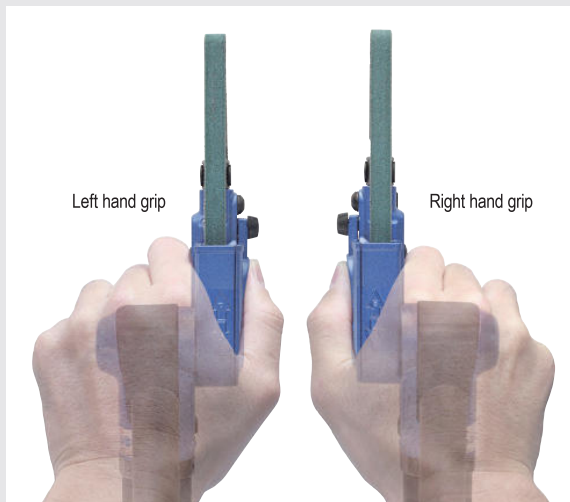
Model	BB-10B Lever Type	BB-10B Ring Type	BB-20
Air Pressure	MPa (kgf/cm <sup>2</sup> )	0.6 (6)	
Air Consumption (No-load)	m <sup>3</sup> /min	0.2	0.43
Free Speed	min <sup>-1</sup> (rpm)	17000	16000
Belt Speed	m/min	1120	1100
Belt Size	mm	10 x 330	20 x 330
Inlet Size		Rc 1/4	
Mass (Weight)	kg	0.55	0.8
Accessories Included	<ul style="list-style-type: none"> <li>• Abrasive Belt Z#100 x 10 mm (Installed)</li> <li>• Abrasive Belt Z#120 x 10 mm</li> <li>• Abrasive Belt Z#180 x 10 mm</li> <li>• Abrasive Belt Z#240 x 10 mm</li> <li>• 1.5 mm Hex. Socket Screw Key</li> <li>• Bushing R 1/4 x NPT 1/4</li> <li>• Offset Bracket Ass'y</li> </ul>	<ul style="list-style-type: none"> <li>• Abrasive Belt Z#100 x 10 mm (Installed)</li> <li>• Abrasive Belt Z#120 x 10 mm</li> <li>• Abrasive Belt Z#180 x 10 mm</li> <li>• Abrasive Belt Z#240 x 10 mm</li> <li>• 1.5 mm Hex. Socket Screw Key</li> <li>• Bushing R 1/4 x NPT 1/4</li> <li>• Offset Bracket Ass'y</li> </ul>	<ul style="list-style-type: none"> <li>• Abrasive Belt Z#60 x 20 mm (Installed)</li> <li>• Abrasive Belt Z#120 x 20 mm</li> <li>• Abrasive Belt Z#240 x 20 mm</li> <li>• 2.5 mm Hex. Socket Screw Key</li> <li>• 3 mm Hex. Socket Screw Key</li> <li>• Shoe</li> <li>• Dust Cover</li> <li>• Bushing R 1/4 x NPT 1/4</li> </ul>

### Quick and easy belt installation and removal "NO Tools Required"



### The throttle lever can be turned by 180 degrees.

Ergonomically designed for right or left hand operator convenience



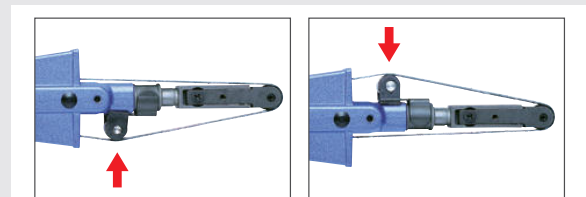
### Sanding for curved surfaces

Curved surface sanding is possible by using the offset bracket.



### The offset bracket can be positioned up or down.

Push-in offset bracket pulley allows the following use.



# SANDING

## Easy switching of belt rotation direction (BB-10B)

By adjusting the lever of the FR valve, the rotation direction of the abrasive belt can be changed. The direction of the chip splash can be changed by switching the rotation direction. The rotation speed can also be adjusted by the angle of the lever.

### Controlling the chip splash direction

To the rear (forward)



To the front (reverse)



### Adjusting FR Valve

The rotation speed can also be adjusted by the angle of the lever.



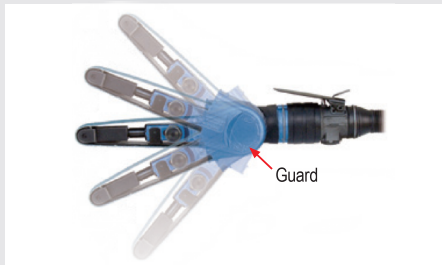
Forward (right)



Reverse (left)

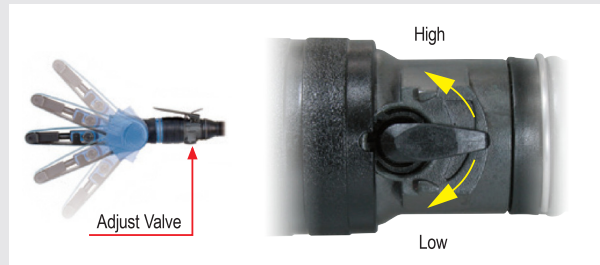
## Guard position is adjustable (BB-20)

Guard angle can be changed freely in accordance with the working position and shape of the workpieces.



## Belt Speed Adjustment (BB-20)

Belt speed can be easily adjusted by turning the adjust valve without a tool.



## Ideal for deburring, chamfering, bead grinding, and polishing applications

Deburring of die cast parts.



Detail finishing of aluminum material.



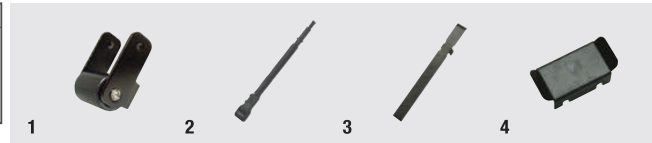
Chamfering of straight parts.



### Optional Parts

Ref. No.	PN	Description	Sales Unit	Model
1	TB07109	Offset Bracket 20 Ass'y	1 set	BB-20
2	TB07224	Tension Bar 520 Ass'y*	1 set	
3	TQ10701	Shoe 520*	1 piece	
4	TB07227	Finger Pad Ass'y 520	1 set	

\*TB07224 and TQ10701 are used together.



### Abrasive Belt for BABY BELTON-10

Belt Size : 10 mm x 330 mm (W x L)				
Grit	PN			
	Zirconia (Z)	Alumina (AA)	Ceramic (CE)	
#40	-	-	TB08368	
#60	TA9A064	-	TB08369	
#80	TB00076	-	TB08370	
#100	TB00077	-	TB08371	
#120	TB00247	-	TB08372	
#180	TB00248	-	-	
#240	TB00249	-	-	
#400	-	TA9A244	-	
Sales Unit	50 pcs./set		50 pcs./set	

### Abrasive Belt for BABY BELTON-20

Belt Size : 20 mm x 330 mm (W x L)				
Grit	PN			
	Zirconia (Z)	Alumina (AA)	Ceramic (CE)	
#40	-	-	-	-
#60	TB07114	-	TB07125	-
#80	TB07115	-	TB07126	-
#100	TB07116	-	TB07127	-
#120	TB07117	-	TB07128	-
#180	TB07118	-	-	TB07122 A-M Equivalent to #180
#240	TB07119	-	-	-
#320	-	-	-	TB07121 A-VF Equivalent to #320
#400	-	TB07120	-	TB07123 S-SF Equivalent to #400
Sales Unit	20 pcs./set		20 pcs./set	5 pcs./set